

# SHAFT SWITCHING RUGS SERIES No.6 March 2009

## NEW LEVER SYSTEM ATTACHED TO LOOM

### NAME

### JORJA'S BUTTERFLIES

Single in every second dent  
5EPI (reed 10 dents per inch)

1ST rug on warp

2-2-1-1-1-1-1.....

.....1-1-1-2-2

Finished April 15th

Design	4 end block weave
Threads	179
SS Units	88
warp	Thick linen
Weft	Mixed Carpet wool
weight	2.5 Kilos approx.
Width	79 cms
Length	137 cms





## **SHAFT SWITCHING RUGS SERIES No.6 March 2009**

### **NEW LEVER SYSTEM ATTACHED TO LOOM**

#### **NAME THE TRIFFIDS**

Single in every second dent 5EPI (reed 10 dents per inch)

2ND rug on warp

2-2-1-1-1-1-1.....1-1-1-2-2

Rug started on 20th April Finished 6th May

Design	4 end block weave
Threads	179
SS Units	88
warp	Thick linen
Weft	Mixed Carpet wool
weight	3.6 Kilos
Width	81.5 cms
Length	180 cms





# SHAFT SWITCHING RUGS

## SERIES No.6 March 2009

### NAME MIDNIGHT PETUNIAS

Single in every second dent 5 EPI  
(reed 10 dents per inch)

3RD rug on warp

2-2-1-1-1-1-1.....1-1-1-2-2

Started 7th May finished 28th May

Design	4 end block weave
Threads	179
SS Units	88
warp	Thick linen
Weft	Mixed Carpet wool
weight	4.2 Kilos
Width	81 cms
Length	190 cms









## SHAFT SWITCHING RUGS SERIES No.7 MAY 2009

**NAME** GREEN CORPORATION 1

Single in every second dent 5EPI (reed 10dents per inch)

1ST rug on Preston synthetic 8 metre warp

2-2-1-1-1-1-1.....1-1-1-2-2

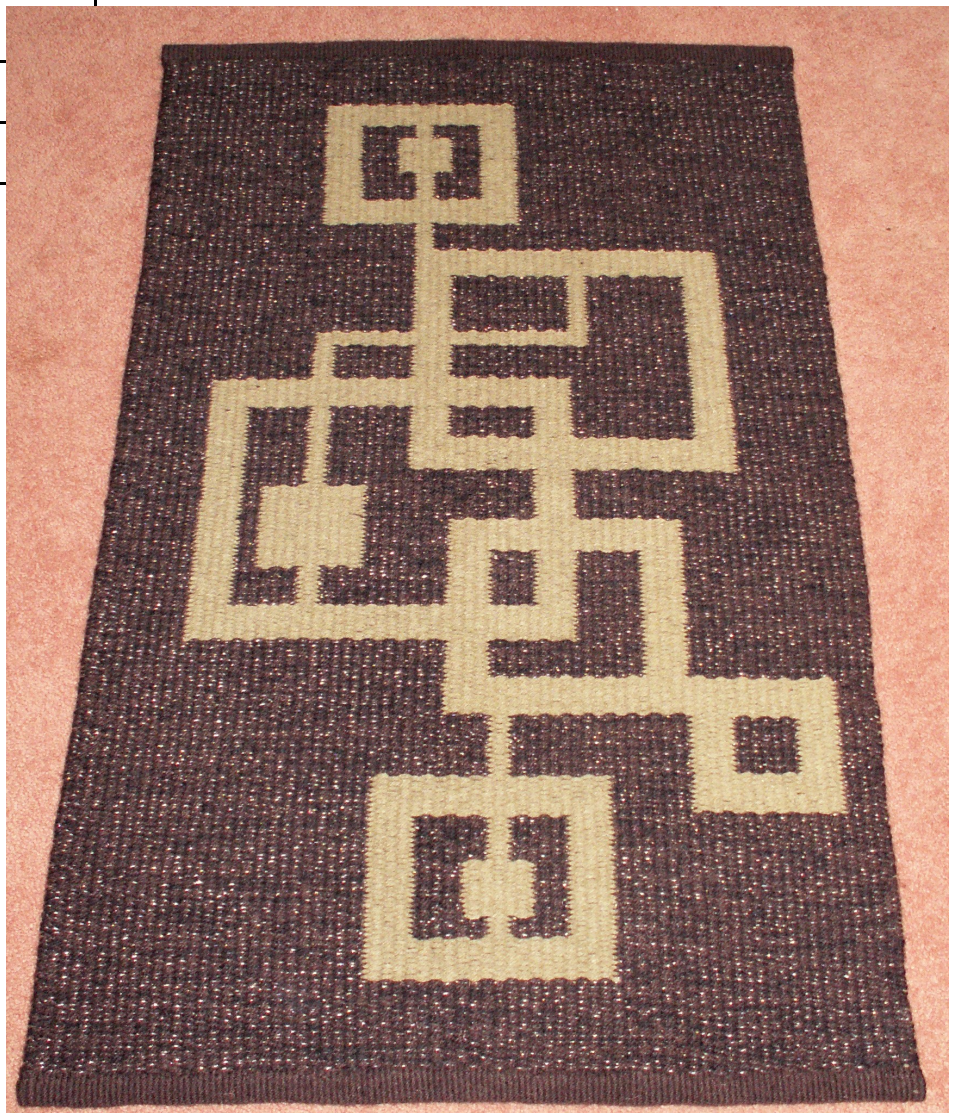
Started 8th June Finished 10th June

### NOTE ON METHOD

Treadles are numbered 1,2,3,4, and  
Tabby1 Tabby2

Design	4 end block weave
Threads	150
SS Units	73
warp	Preston Wool Mix
Weft	Carpet wool
weight	1.8 Kilos
Width	67 cms
Length	108 cms

Woven with dark colour on the front.  
1st throw green from left (1)  
2nd throw dark from the right (2)  
3rd throw green from right (3)  
4th throw dark from left. (4)  
Keep dark colour on top for this rug.





## SHAFT SWITCHING RUGS SERIES No.7 MAY 2009

### NAME DIGITAL INVASION

Single in every second dent 5EPI (reed 10dents per inch)

2nd rug on Preston wool/synthetic 8 metre warp

2-2-1-1-1-1-1.....1-1-1-2-2

Started 26th June

Finished 6th July

Design	4 end block weave
Threads	150
SS Units	73
warp	Preston Wool Mix
Weft	Daylesford wool
weight	2 Kilos approx.
Width	71 cms
Length	134 cms





## SHAFT SWITCHING RUGS SERIES No.7 AUGUST 2009

### NAME ALPACA PADDOCK

Single in every second dent 5EPI (reed 10dents per inch)

4TH rug on Preston synthetic

8 metre warp

2-2-1-1-1-1-1.....1-1-1-2-2

Design	4 end block weave
Threads	150
SS Units	73
warp	Preston Wool Mix
Weft	Hand Spun wool & Daylesford Wool dyed
weight	2 Kilos
Width	70 cms
Length	120 cms





## SHAFT SWITCHING RUGS SERIES No.7 AUGUST 2009

### NAME RED ENTRANCE

Single in every second dent 5EPI (reed 10dents per inch)

3RD rug on Preston Synthetic 8 metre warp

2-2-1-1-1-1-1.....1-1-1-2-2

Design	4 end block weave
Threads	150
SS Units	73
warp	Preston mixed
Weft	Carpet Wool mixed
weight	1.8 Kilos approx.
Width	70 cms
Length	111 cms





## SHAFT SWITCHING RUGS SERIES No.7 OCTOBER 2009

### NAME CRAZZED

Single in every second dent 5EPI (reed 10dents per inch)

3RD rug on Preston Synthetic 8 metre warp

2-2-1-1-1-1-1.....1-1-1-2-2

Finished 4th October and sold next day \$200

Design	4 end block weave
Threads	150
SS Units	73
warp	Preston mixed
Weft	Carpet Wool mixed
weight	1.8 Kilos approx.
Width	70 cms
Length	111 cms





# SHAFT SWITCHING RUGS SERIES No.7 NOVEMBER 2009

## NAME COLLINGWOOD

Single in every second dent 5EPI (reed 10dents per inch)  
3RD rug on Preston Synthetic 8 metre warp  
2-2-1-1-1-1-1.....1-1-1-2-2

Design	4 end block weave
Threads	150
SS Units	73
warp	Preston mixed
Weft	Carpet Wool mixed
weight	1.2 Kilos
Width	68 cms
Length	90 CMS

