

# SHAFT SWITCHING RUGS SERIES No.12 April 2011

**NAME** Caesar II      **4 end block weave**

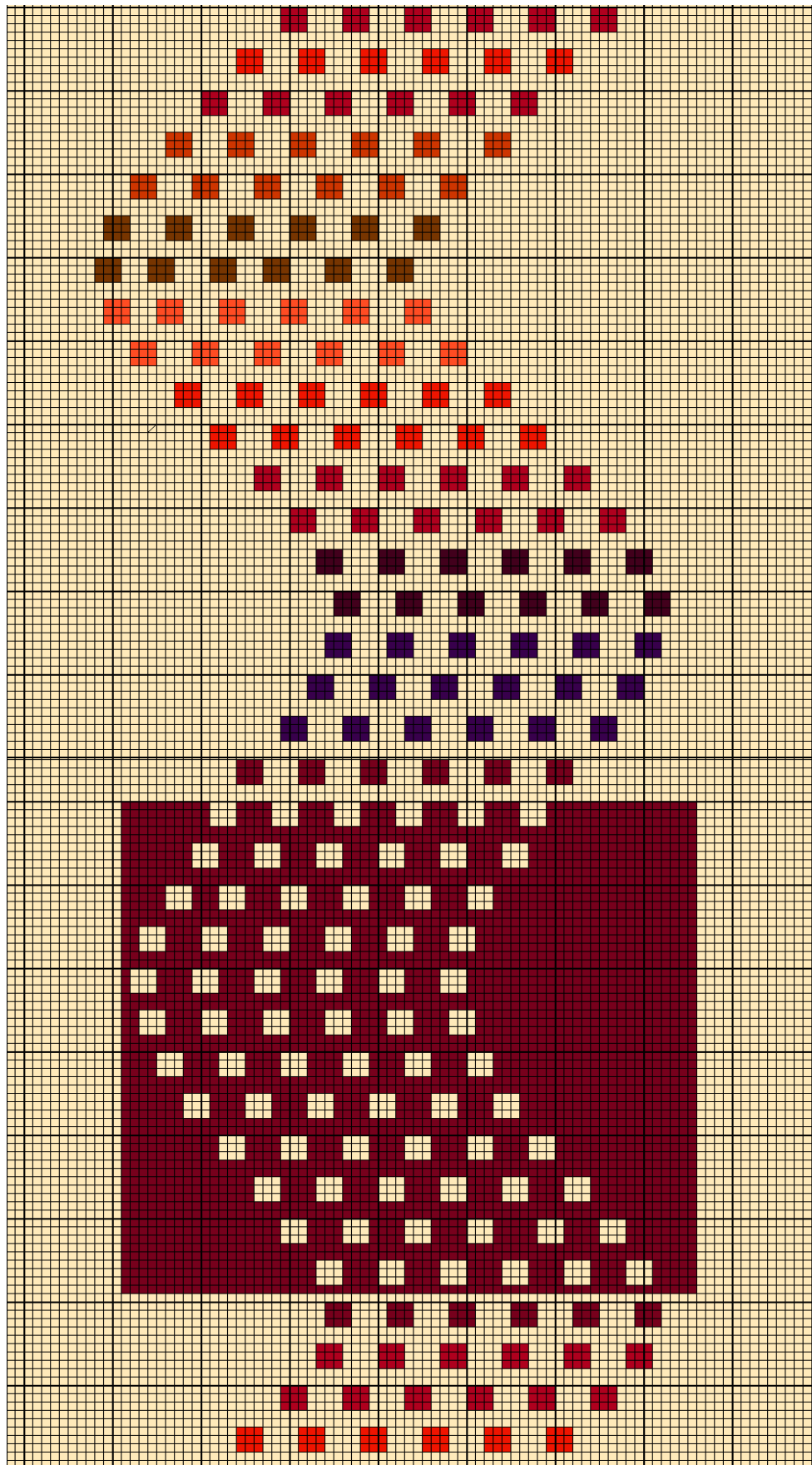
3	2	-	2	-	2	-	2.....	-	2	-	2	-	2	-	2	3
---	---	---	---	---	---	---	--------	---	---	---	---	---	---	---	---	---

Single then doubled in every second dent 5EPI (reed 10 dents per inch) 11.5 metre warp 14 cones of 8/5 linen

Design	4 end block weave
Threads	194 + 96= 290
SS Units	92
warp	Linen 8/5
Weft	Carpet wool
weight	kilos
Width	88 cms
Length	22 inches



# GRID FOR FORMULAR RUGS





# SHAFT SWITCHING RUGS SERIES No.12 May 2011

**NAME** Formula One      **4 end block weave**

3	2	-	2	-	2	-	2.....	-	2	-	2	-	2	-	2	3
---	---	---	---	---	---	---	--------	---	---	---	---	---	---	---	---	---

Single then doubled in every second dent 5EPI (reed 10 dents per inch) 11.5 metre warp 14 cones of 8/5 linen

Design	4 end block weave
Threads	194 + 96= 290
SS Units	92
warp	Linen 8/5
Weft	Carpet wool
weight	3.5 kilos
Width	88 cms
Length	180 cms





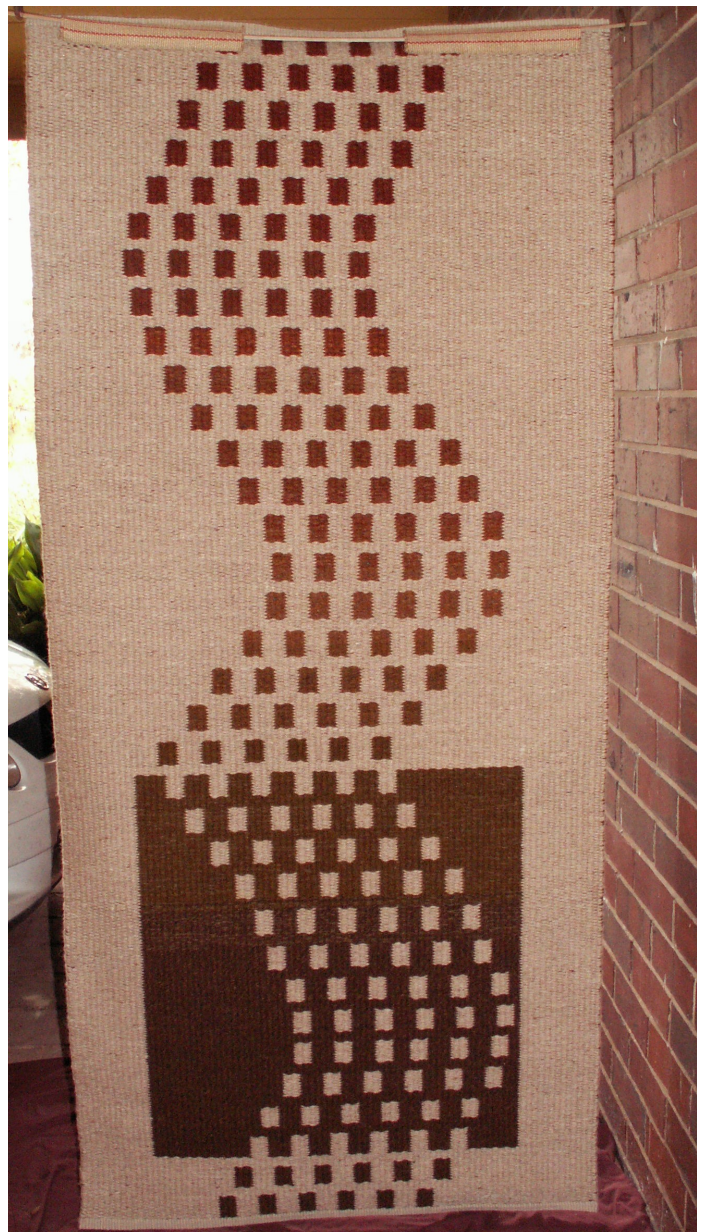
# SHAFT SWITCHING RUGS SERIES No.12 April 2011

**NAME** Formula Two      **4 end block weave**

3	2	-	2	-	2	-	2.....	-	2	-	2	-	2	-	2	3
---	---	---	---	---	---	---	--------	---	---	---	---	---	---	---	---	---

Single then doubled in every second dent 5EPI (reed 10 dents per inch) 11.5 metre warp 14 cones of 8/5 linen

Design	4 end block weave
Threads	194 + 96= 290
SS Units	92
warp	Linen 8/5
Weft	Carpet wool
weight	3.5 kilos
Width	88 cms
Length	180 cms





# SHAFT SWITCHING RUGS SERIES No.12 June2011

NAME Crazy 4 end block weave

3	2	-	2	-	2	-	2.....	-	2	-	2	-	2	-	2	3
---	---	---	---	---	---	---	--------	---	---	---	---	---	---	---	---	---

Single then doubled in every second dent 5EPI (reed 10 dents per inch) 11.5 metre warp 14 cones of 8/5 linen

Design	4 end block weave
Threads	194 + 96= 290
SS Units	92
warp	Linen 8/5
Weft	Carpet wool
weight	kilos
Width	88 cms
Length	22 inches





# SHAFT SWITCHING RUGS SERIES No.12 June2011

**NAME Fern Gully 4 end block weave**

3	2	-	2	-	2	-	2.....	-	2	-	2	-	2	-	2	3
---	---	---	---	---	---	---	--------	---	---	---	---	---	---	---	---	---

Single then doubled in every second dent 5EPI (reed 10 dents per inch) 11.5 metre warp 14 cones of 8/5 linen

Design	4 end block weave
Threads	194 + 96= 290
SS Units	92
warp	Linen 8/5
Weft	Carpet wool
weight	kilos
Width	88 cms
Length	22inches





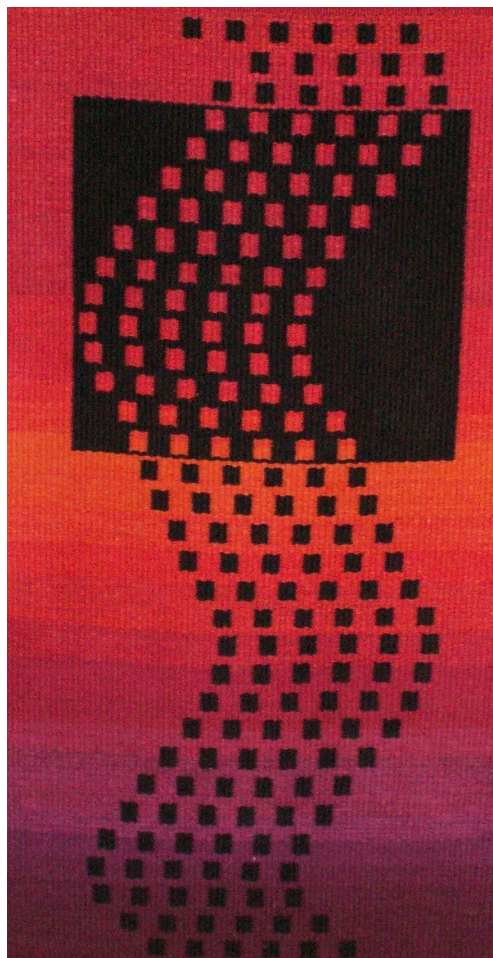
# SHAFT SWITCHING RUGS SERIES No.12 June2011

**NAME**    **Formula Three**        **4 end block weave**

3	2	-	2	-	2	-	2.....	-	2	-	2	-	2	-	2	3
---	---	---	---	---	---	---	--------	---	---	---	---	---	---	---	---	---

Single then doubled in every second dent 5EPI (reed 10 dents per inch) 11.5 metre warp 14 cones of 8/5 linen

Design	4 end block weave
Threads	194 + 96= 290
SS Units	92
warp	Linen 8/5
Weft	Carpet wool
weight	3.5 kilos
Width	87 cms
Length	64 cms





# SHAFT SWITCHING RUGS SERIES No.12 July2011

**NAME** Formula four  
**4 end block weave**

3	2	-	2	-	2	-	2.....	-	2	-	2	-	2	-	2	3
---	---	---	---	---	---	---	--------	---	---	---	---	---	---	---	---	---

Single then doubled in every second dent 5EPI (reed 10 dents per inch) 11.5 metre warp 14 cones of 8/5 linen

Design	4 end block weave
Threads	194 + 96= 290
SS Units	92
warp	Linen 8/5
Weft	Carpet wool
weight	3.5 kilos
Width	87 cms
Length	164 cms





# SHAFT SWITCHING RUGS SERIES No.12 JAN 2011

## 3 END BLOCK WEAVE

### NAME WILDFIRE II

Warp 8/5 wet spun linen

Single then DOUBLE in every second dent 4EPI (reed 8 dents per inch) 7 metre warp

4	-	3	2	-	2	-	2.....	-	2	-	2	-	2	3	-	4
---	---	---	---	---	---	---	--------	---	---	---	---	---	---	---	---	---

Design	3 end block weave
Threads	168
SS Units	55
warp	Linen
Weft	Carpet wool
weight	4.6 kilos
Width	97 cms
Length	202 cms



#### Weaving Notes

2 colours

Back colour A

Front colour B

A always sits in front of B

Press shaft 1 throw A from left 8" of bubble 4 loops.

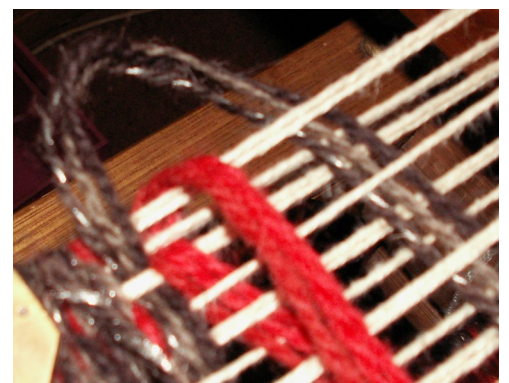
Press shaft 4 throw B from right 8' of bubble Make 7 bubbles to end.

Hold next treadle until bubble is completed.

Press shaft 2 throw A from right 8' of bubble Press shaft 3 throw B from left 8' of bubble

Make 7 bubbles to end.

Hold next treadle until bubble is completed.





# SHAFT SWITCHING RUGS SERIES No.12 MAY 2011

## 3 END BLOCK WEAVE

NAME RED LILLIES

Warp 8/5 wet spun linen

Single THEN DOUBLE in every second dent 4EPI (reed 8 dents per inch) 7 metre warp

4	-	3	2	-	2	-	2.....	-	2	-	2	-	2	3	-	4
---	---	---	---	---	---	---	--------	---	---	---	---	---	---	---	---	---

Design	3 end block weave
Threads	168
SS Units	55
warp	Linen
Weft	Carpet wool
weight	4.6 kilos
Width	97 cms
Length	208 cms

