

SHAFT SWITCHING RUGS SERIES No.21 2021

7 meter warp (Synthetic/wool) July 2021

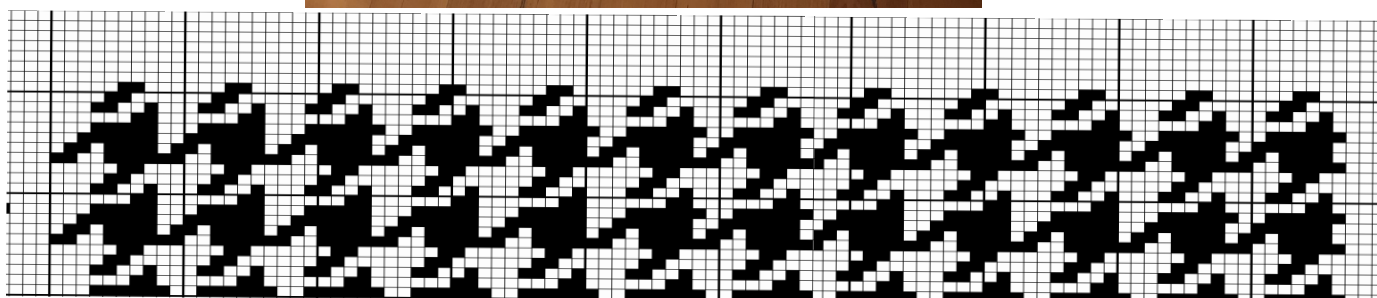
NAME: HOUNDSTOOTH

GLIMAKRA loom -4 end block-

REED 5 EPI. 100 units,

Warp: Mixed Nylon wool, Weft Mixed Carpet wool

Design	4 end block weave
Threads	200 doubles
SS Units	100
Warp	Nylon/wool
Weft	Carpet wool
Weight	2.1 kilos
Width	94 cms
Length	



SHAFT SWITCHING RUGS SERIES No.21 2021

7 meter warp (Synthetic/wool) August 2021

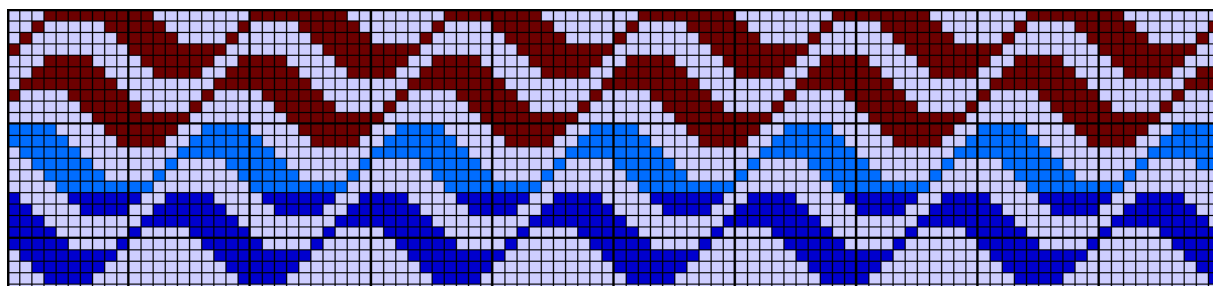
NAME: WAVES

GLIMAKRA loom -4 end block-

REED 5 EPI. 100 units,

Warp: Mixed Nylon wool, Weft Mixed Carpet wool

Design	4 end block weave
Threads	200 doubles
SS Units	100
Warp	Nylon/wool
Weft	Carpet wool
Weight	kilos
Width	94cms
Length	? cms



SHAFT SWITCHING RUGS SERIES No.21 2021

7 meter warp (Synthetic/wool) September 2021

NAME: FESTIVE BOXES

GLIMAKRA loom -4 end block-

REED 5 EPI. 100 units,

Warp: Mixed nylon wool, Weft Mixed Carpet wool

Design	4 end block weave
Threads	200 doubles
SS Units	100
Warp	Nylon/wool
Weft	Carpet wool
Weight	2.1 kilos
Width	94 cms
Length	110 cms

